

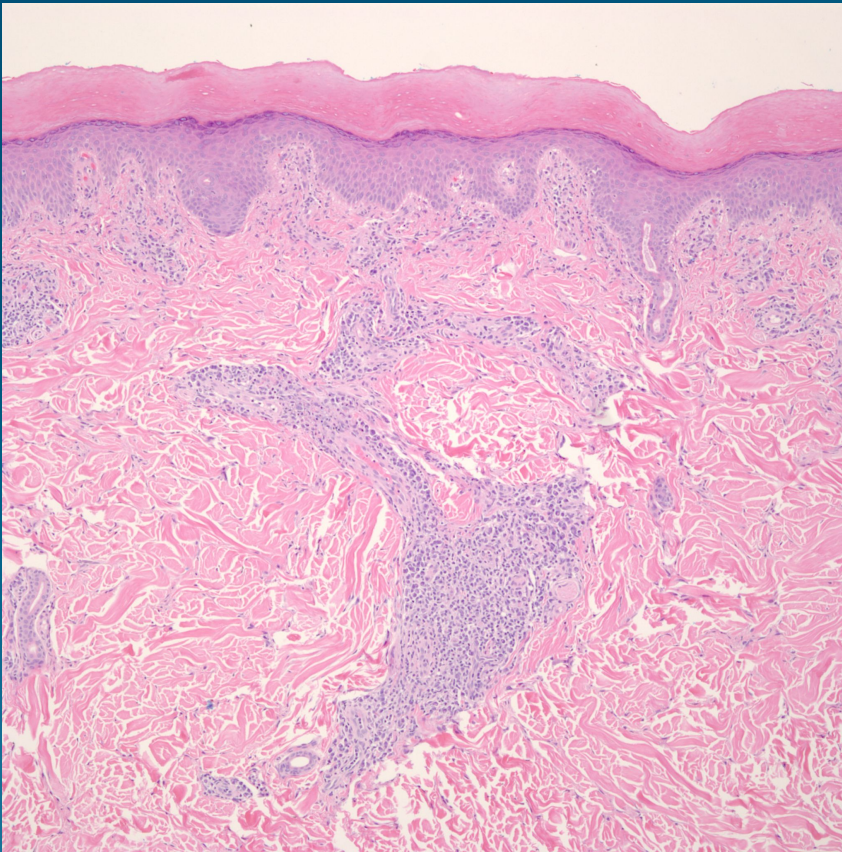
# Secondary Syphilis

Warthin-Starry stain negative

Positive VDRL



# Pearls



- Variable spongiotic and epidermal changes associated with a superficial perivascular dermatitis with numerous plasma cells
- Warthin-Starry stain may show spirochete organisms at the dermal-epidermal junction and around endothelial cells
- Confirm with serological studies and clinical correlation