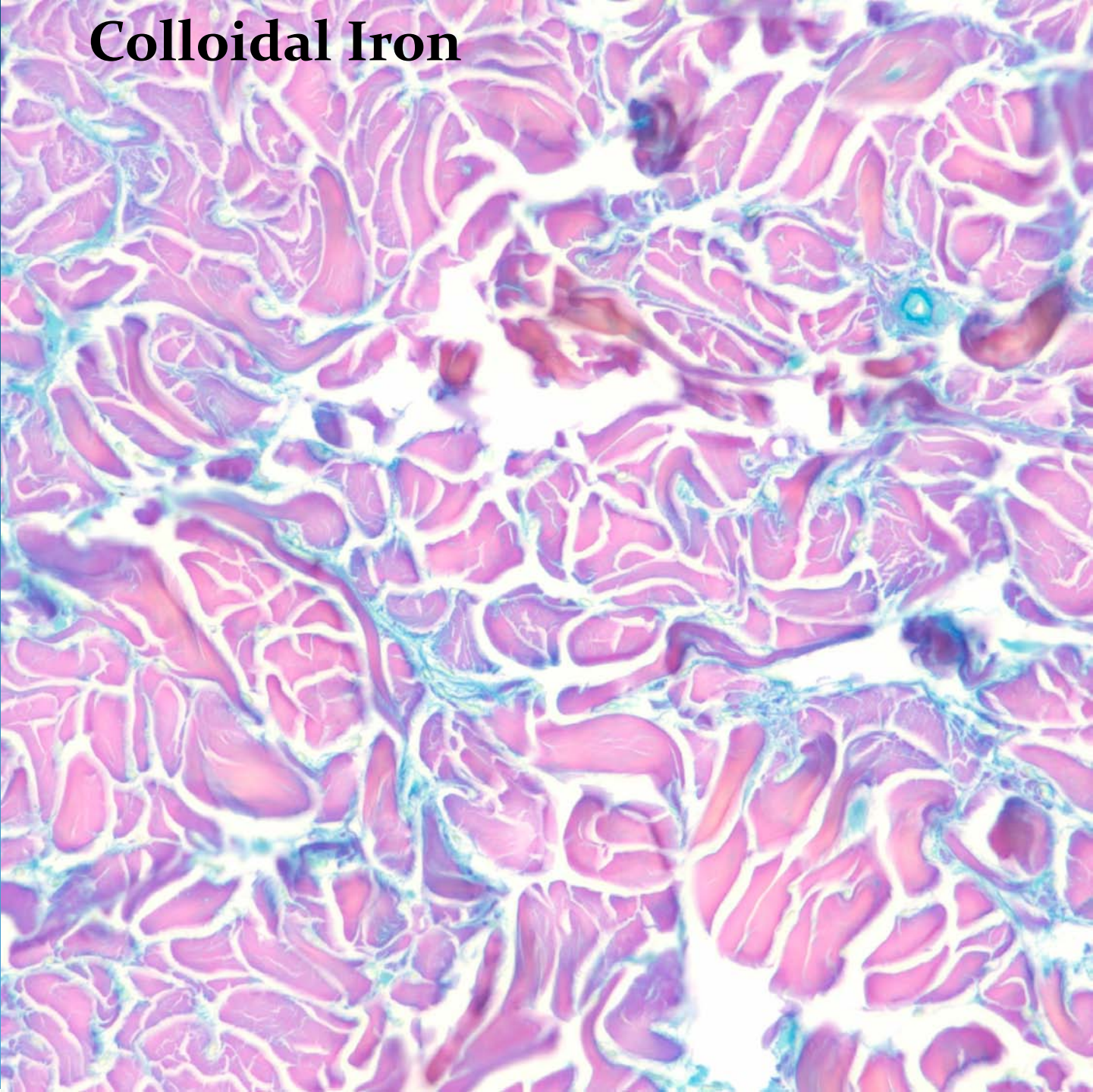
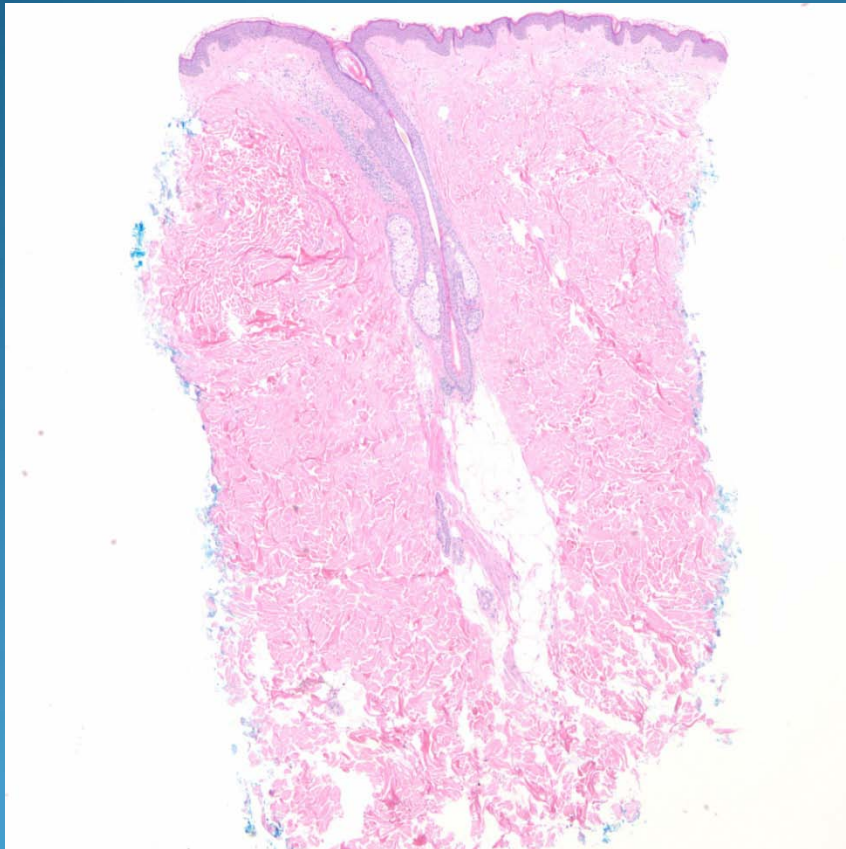


Scleredema

Colloidal Iron



Pearls



- Square biopsy sign indicative of a sclerotic or infiltrative process
- Minimal to absent inflammatory cell infiltrate
- May see slit-like separation of thickened collagen bundles within reticular dermis
- Confirm my mucin stains (colloidal iron, Alcian blue/PAS, mucicarmine)