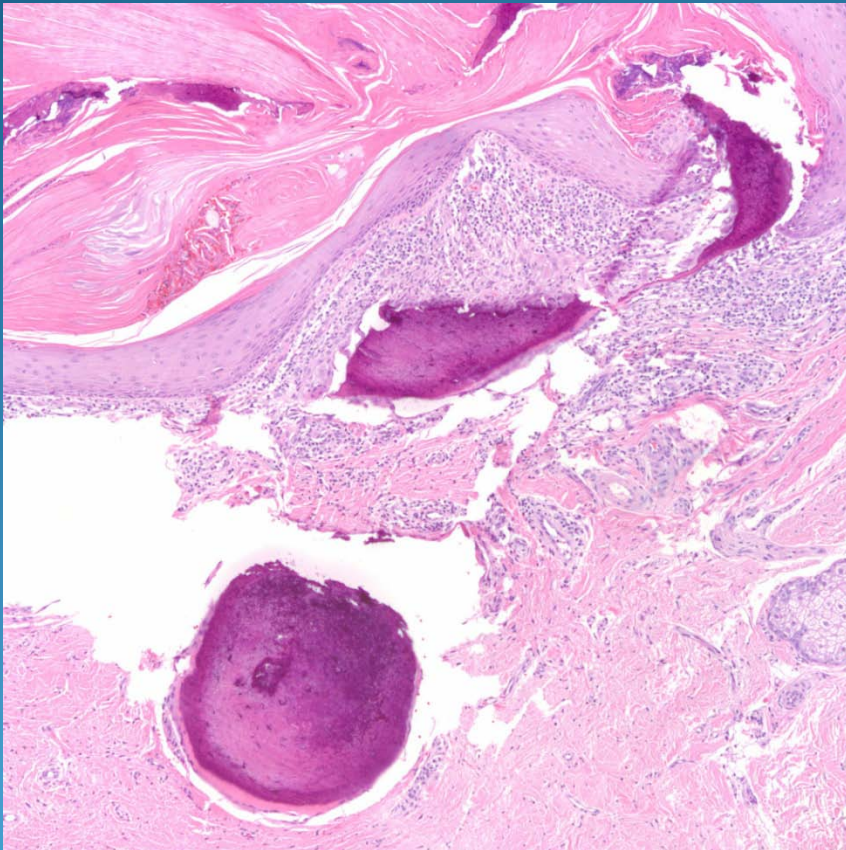


What is the best diagnosis?

- A. Osteosarcoma
- B. Chondroid metaplasia
- C. Chondrodermatitis nodularis helioides
- D. Osteoma cutis
- E. Gouty tophus

Osteoma cutis arising with an
epidermal inclusion cyst

Pearls



- Benign bone with variable calcification
- May show “chatter” artifact and tissue drop out around bone
- If secondary osteoma cutis, may see precursor lesion ie, epidermal cyst, granuloma, hemangioma, etc.