

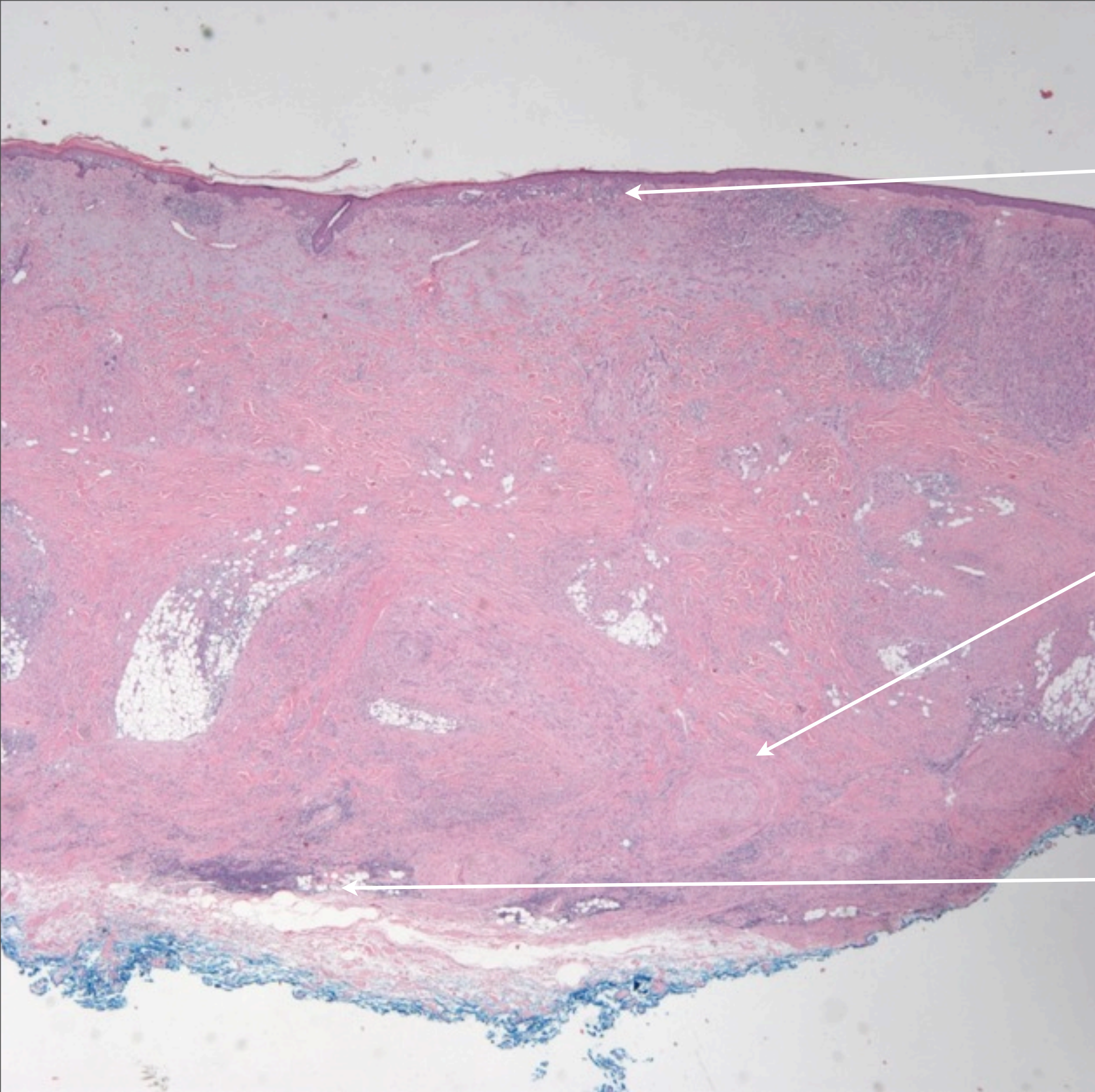


S100



Melan A

Desmoplastic Malignant Melanoma

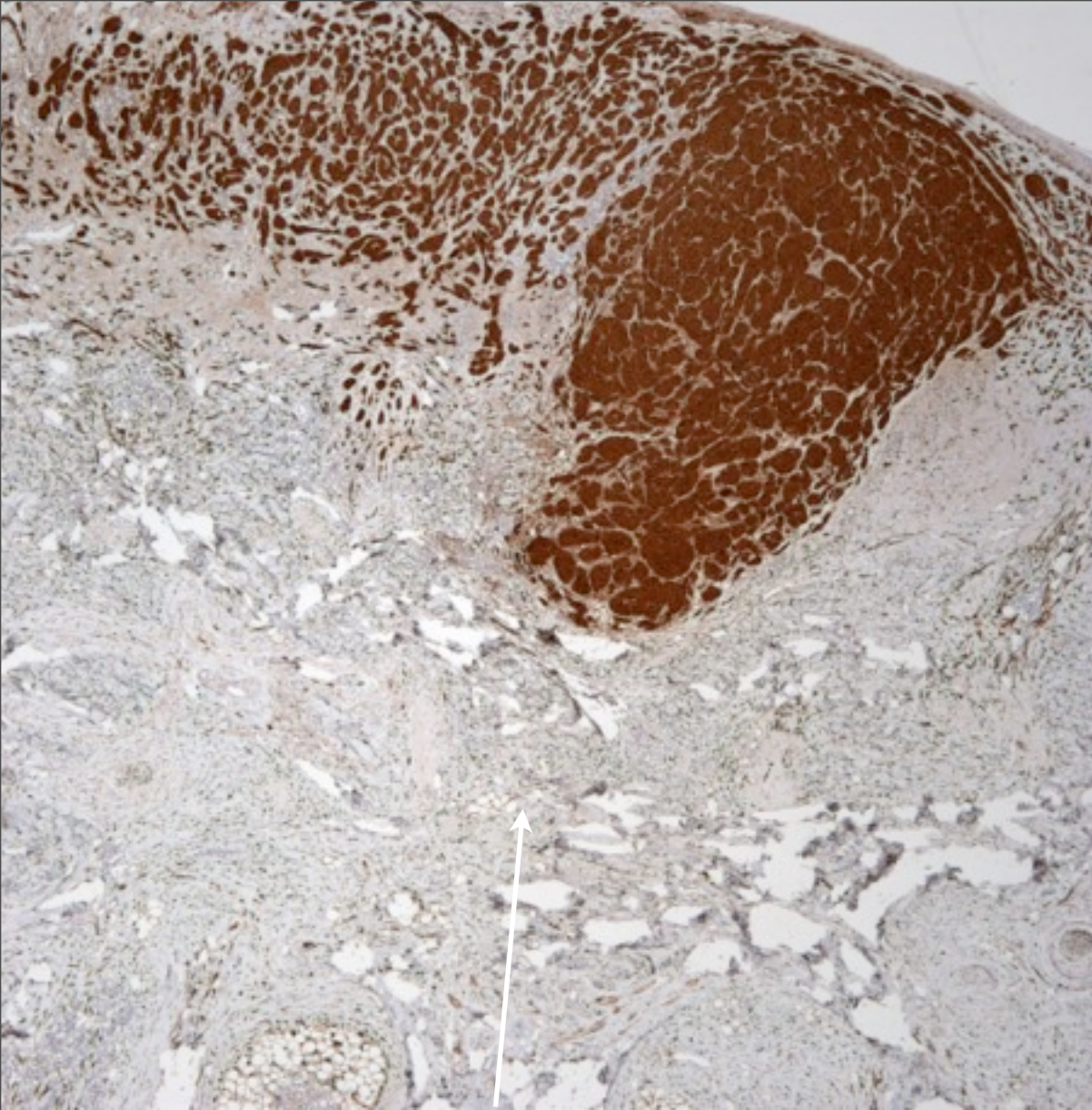


Atypical Junctional
Component

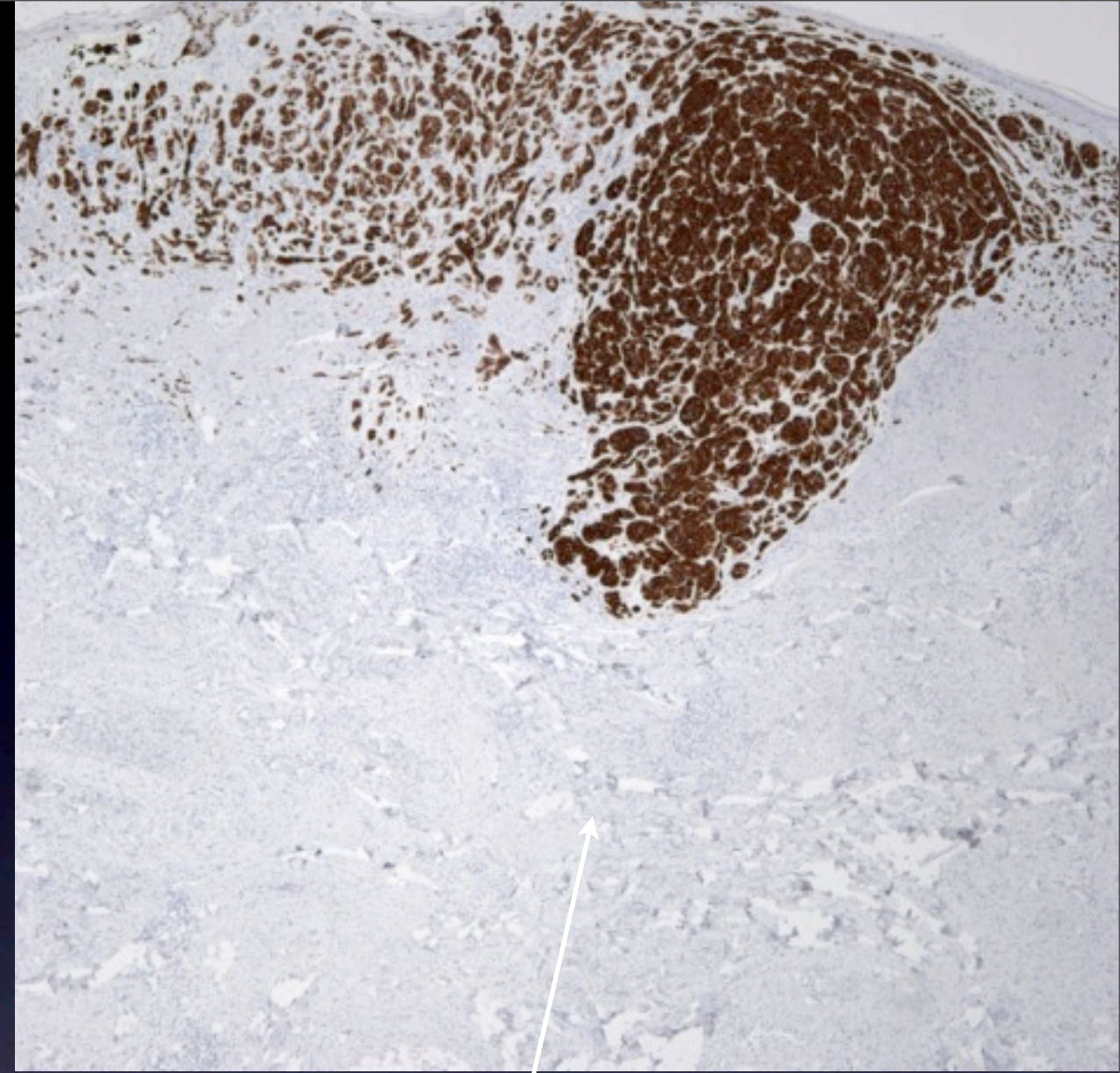
Perineural Invasion
Common

Lymphoid Aggregates

Spindle Cell Neoplasm with variable cellularity



S100



Melan A

Note the absence of stain in deep dermal spindle cells

The spindle cell component in Desmoplastic melanoma is S100 positive but often negative for melanoma specific markers such as Melan A and HMB-45