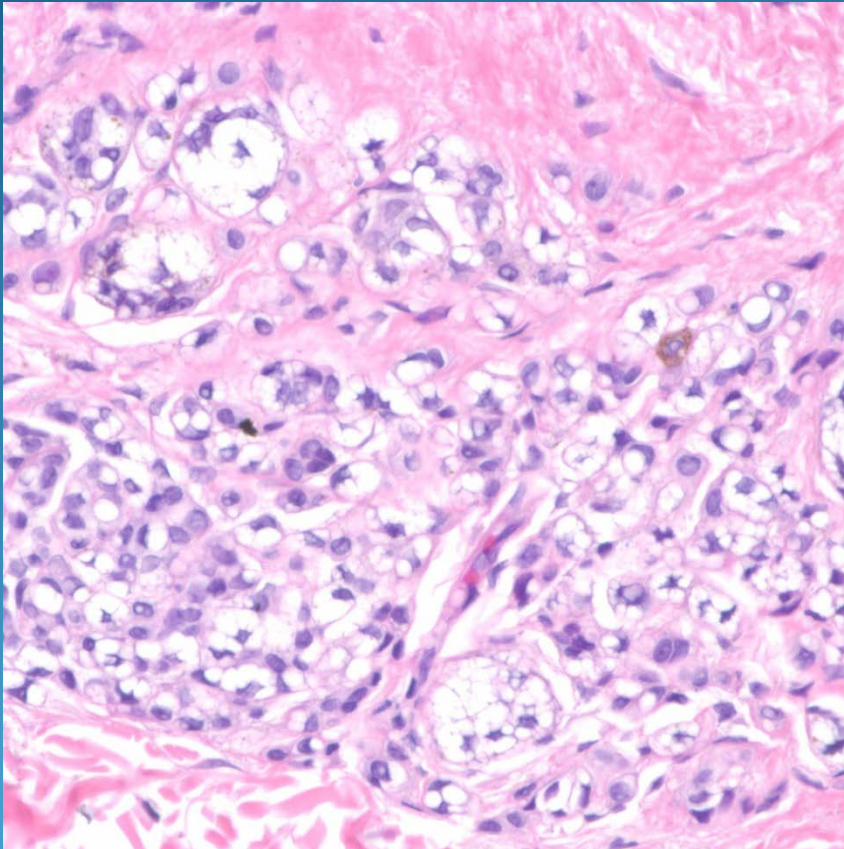


# What is the diagnosis?

- A. Sebaceous adenoma
- B. Granular cell tumor
- C. Glomus tumor
- D. Halo nevus
- E. Eccrine spiradenoma

# Halo Nevus

# Pearls



- Melanocytic nevus with clear cytoplasmic features in most of the melanocytes
- May show focal melanin pigmentation
- Use same criteria to differentiate benign melanocytic nevi from melanoma
- NOTE: Balloon cell changes may occur in benign to malignant melanocytic proliferations