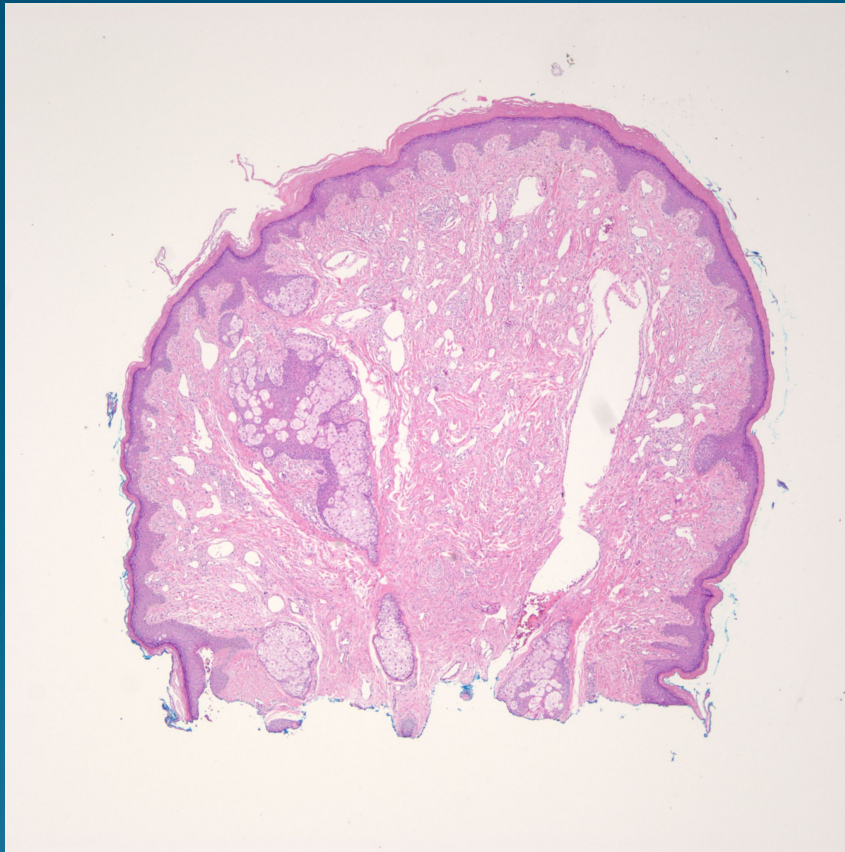


What is the best diagnosis?

- A. Trichoepithelioma
- B. Trichofolliculoma
- C. Fibrous papule
- D. Dermatofibroma
- E. Angiolipoma

Fibrous Papule

Pearls



- Dome shaped papule with proliferation of bland vessels and stellate fibroblasts
- Occasionally melanocytic hyperplasia at dermal-epidermal junction