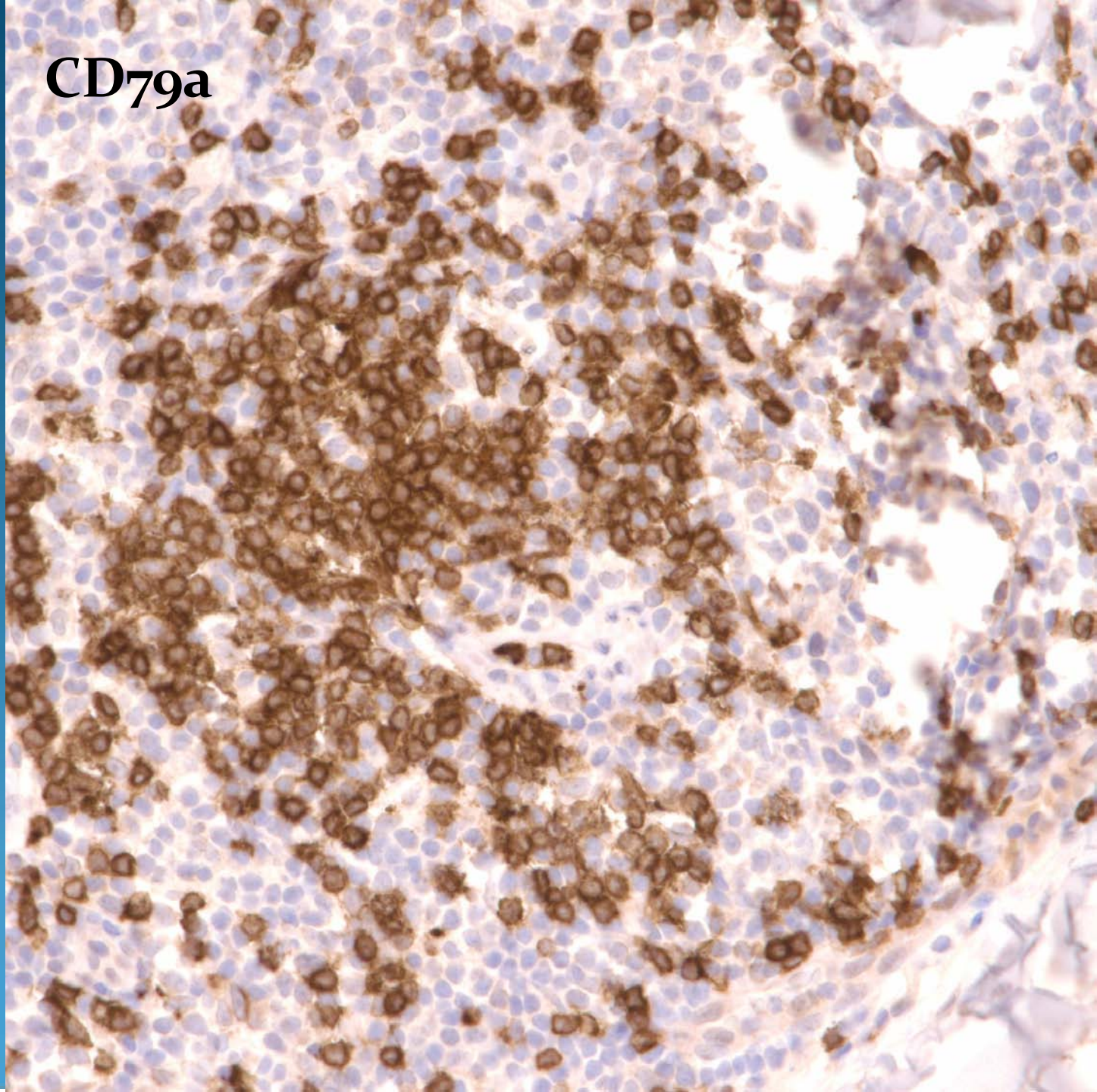
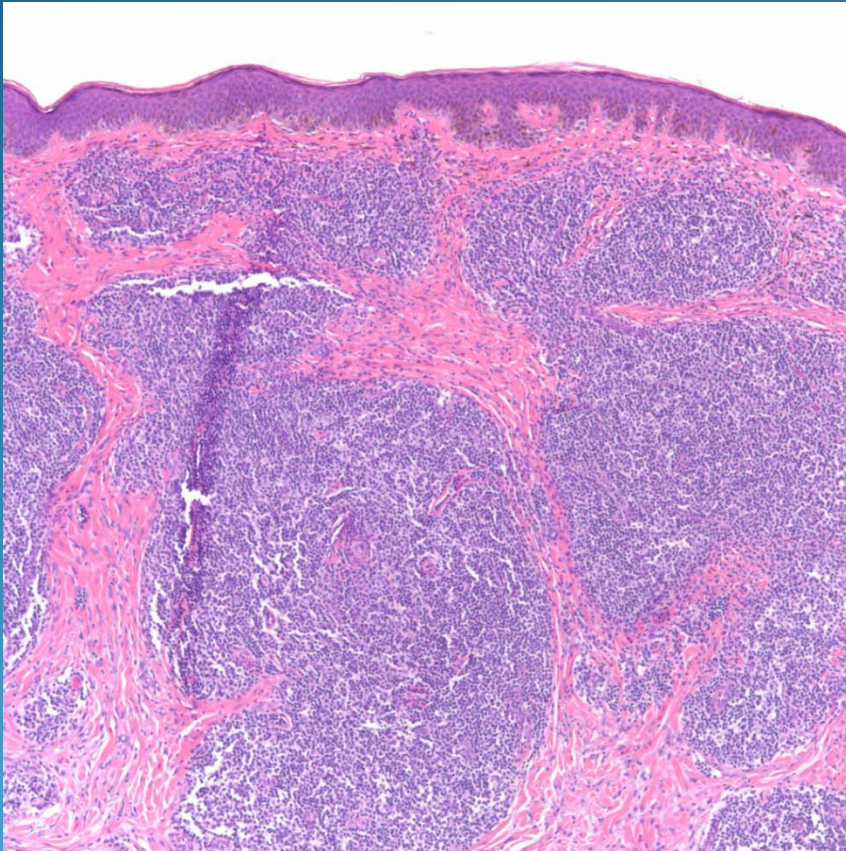


Cutaneous Marginal Zone Lymphoma-B cell immunophenotype

CD79a



Pearls



- Bottom heavy lymphoid infiltrate
- Grenz zone separates infiltrate from epidermis
- May have germinal centers
- Look for infiltration around eccrine ducts
- Confirm with IHC: B cells positive for CD20/CD79a