

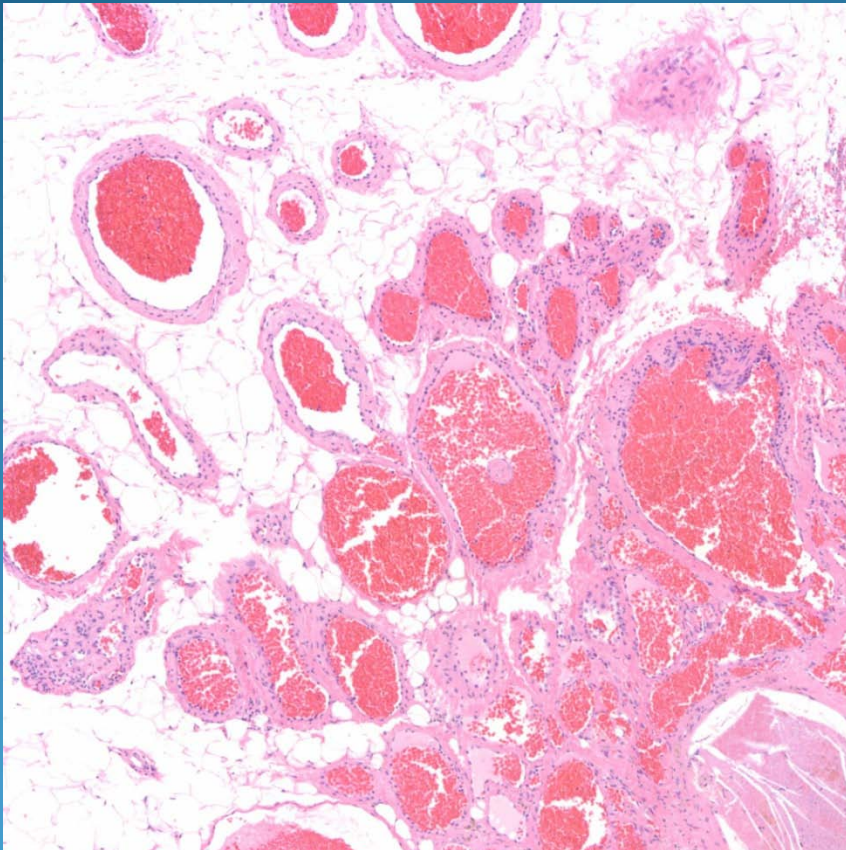
# What is the best diagnosis?

- A. Angiolipoma
- B. Spindle cell lipoma
- C. Liposarcoma
- D. Lipoblastoma
- E. Angiosarcoma

# Angiolipoma



# Pearls



- Proliferation of bland vessels some of which contain intraluminal thrombi
- Admixed with mature adipose tissue
- This case illustrates the principle that angioliipomas are fundamentally hemangiomas with fat recruitment rather than lipomas with a vascular proliferation